



Chemicals Corp.

Technical Data Sheet

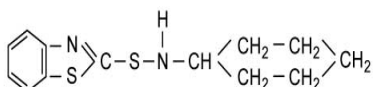
CBS

N-Cyclohexyl-2-benzothiazole sulphenamide

CAS Number: 95-33-0

Molecular weight: 264.40

Molecular formula: $C_{13}H_{16}N_2S_2$



PRODUCT INFORMATION

PRODUCT SPECIFICATIONS		GRANULES	OIL POWDER	POWDER
Appearance		White granules	White oil powder	White powder
Melting Point	°C min	98.0	98.0	98.0
Loss on drying	% max	0.30	0.40	0.30
Ash	% max	0.30	0.40	0.30
Free Amine	% max	0.40	0.40	0.40
Residue on sieve (150µm)	% max	-	0.10	0.10
Oil content	%	-	1.0-2.0	-
<u>Typical properties</u>				
Density	g/cm ³	1.31-1.34		
<u>Packaging</u>				
Bag		25kg (55 lbs)		
Pallet		500kg or 600kg (1102 lbs or 1323 lbs)		

FUNCTION

CBS functions as a delayed action accelerator providing a good scorch delay and fast cure rates.

APPLICATIONS AND PROPERTIES

- CBS is a medium to fast primary accelerator suitable for NR, IR, SBR, NBR, HR and EPDM.
- Material is an outstanding delayed action accelerator.
- Product is most effective and safest when used at ordinary processing temperatures, causing no scorching.
- Once vulcanized, CBS shows excellent physical properties.
- Material has a slight odour.
- Soluble in benzene, chloroform, carbon disulfide. Insoluble in water.
- CBS is regulated for use under the following sections of FDA 21 CFR:
177.2600 – Rubber Articles Intended for Repeated Use in Food Contact.

STORAGE

Material should be stored in a cool, dry, well ventilated area, away from high temperatures. The maximum recommended storage life is 1 year when stored under normal conditions.

HANDLING PRECAUTIONS

For detailed information on toxicological properties and handling precautions, please refer to the current Safety Data Sheet. This information is available by request from **SunBoss Chemicals Corp.**

[Revised: November 3, 2014 by kk]